

SPIN-ON LUBE OIL STRAINER UPGRADE

SELECT COOPER-BESSEMER™ GMV TWO-CYCLE ENGINES

Overview

A selection of early model GMV series engines were shipped from the factory with CUNO™ filters mounted on the front of the engine and used as the lube oil filtration system. These filters were not rated as a micron filter and are not capable of completely removing wear metals from the oil, which could damage the engine and cause unnecessary wear.

Solution and Advantages

Cooper offers an upgrade to convert the existing CUNO lube oil filtration system to a “Spin On” filter element system rated from 7–23 microns, depending on the filter used.

- › Reduced labor cost, downtime and oil spills due to easily changed filters
- › Over the counter filter elements
- › Extending bearing and bushing lifecycle due to better filtration of the lube oil
- › Multiple ports on the filter body to monitor change in pressure across the filters

Included with the package

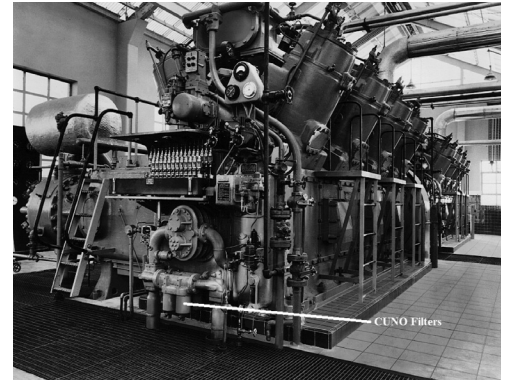
- › Filter element aluminum body sized for oil pump gallons per minute rating
- › One (1) set: “Spin On” filter elements

Interchangeability

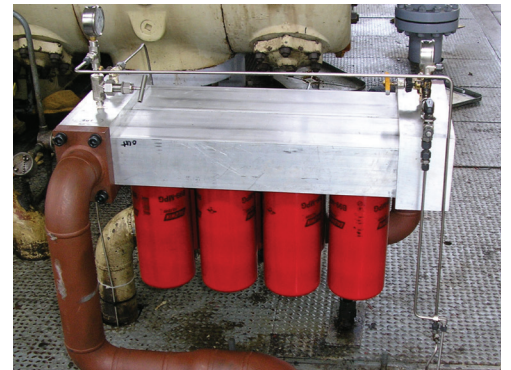
- › The filter body is portable and can be mounted in a convenient location close to the engine.
- › Minimal lube oil piping modifications will be required.

Applicability

- › Cooper-Bessemer engines with CUNO Strainer Lube Oil Filtration system: GMV / GMV-TF / GMVA



Original CUNO lube filtration system



Spin-On filter element system

LEGENDS DON'T STOP. WE MAKE SURE OF IT.™

CALL +1-844-RECIP-43 (INTERNATIONAL: +1-713-354-1299)
24/7 TECH SUPPORT: SUPPORT@COOPERSERVICES.COM
COOPERSERVICES.COM

