

HYPERBALANCE III™ SYSTEM

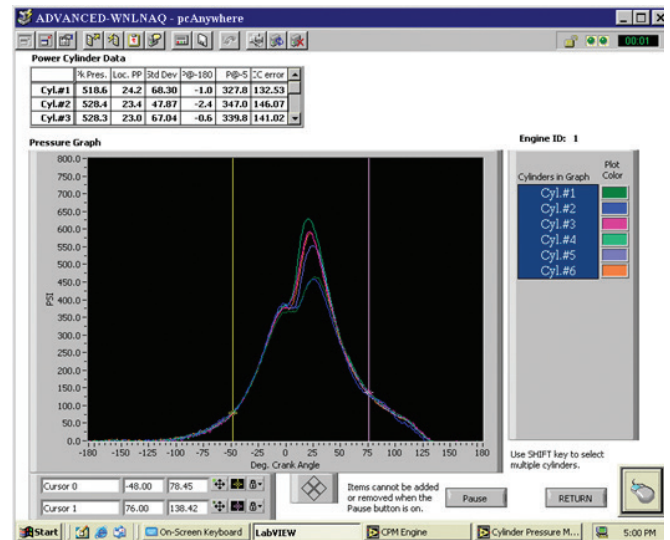
Continuous power cylinder balancing for two- and four-cycle engines

HyperBalance III is a gas engine balancing POWERPC based platform that enables automatic balancing for two- and four-stroke engines up to 20 cylinders.

The HyperBalance III system uses pressure data from the pressure sensors in conjunction with MPU and AMP signals to continuously assess the state of power cylinder balance and combustion stability.

Features

- The HyperBalance III system is a dedicated data acquisition and analysis platform built around a POWERPC industrial processor using flash based memory for faster updates.
- Analog input
 - modules provide for up to 48 input channels
 - selectable 4-10 ma or 0-5 volt
 - built around current sensor technologies
 - can add ion-sense “sensors” (future) in place of, or concurrent with pressure sensors
- Digital outputs – contacts for unit automation alarms and shutdowns based on:
 - peak pressure
 - location of peak pressure
 - standard deviation
- Balancing methods
 - standard peak pressure, pressure ratio and ion (future)
 - All methods can be implemented for manual, auto, and scheduled balancing



Benefits

- HyperBalance III is the most effective and accurate large-bore engine balancing and in-cylinder monitoring platform in the natural gas compression industry
- Updates peak pressure every 5 ms for more accurate in-cylinder monitoring
- Uses pressure ratio balance method and ions (future) as surrogate for air/fuel ratio to maximize local combustion stability within each cylinder
- Detonation detection with alarms and shutdowns
- Automatic for peak engine performance and protection

LEGENDS DON'T STOP. WE MAKE SURE OF IT.™

CALL +1-844-RECIP-43 (INTERNATIONAL: +1-713-354-1299)
 24/7 TECH SUPPORT: SUPPORT@COOPERSERVICES.COM
 COOPERSERVICES.COM