

HYPERFUEL VALVE™ SYSTEM

Electronically operated, high-pressure fuel injection for direct-injected engines

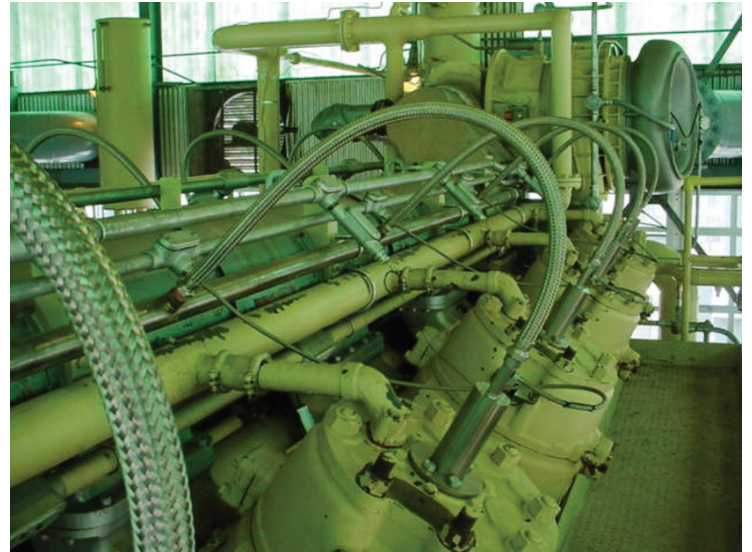
The HyperFuel Valve™ System is a non-hydraulic, electronically operated fuel valve and electronic control system for high-pressure fuel injection in large, natural gas-fueled engines. HyperFuel is an innovative and cost-effective solution for enhanced mixing and emission reduction for direct-injected engines.

Advanced fuel valve technology

- › Pressure balance, fail-safe design
- › Solenoid-actuated pilot valve with switching time less than 1 ms
- › Gas passage around valve guide for cooling
- › Mass-dampened poppet valve provides low impact, extending the life of the valve
- › Provision combustion pressure sensor

Advanced control technology

- › Precise control of engine fueling rate throughout start-up and load ranges
- › Replace governor and fuel control linkages
- › On-board systems diagnostics and serial data interface
- › Intuitive, user-friendly display
- › Expandable for peak pressure sensing & continuous power cylinder balancing



Benefits

- › Save up to 9% on fuel
- › Reduce NOx up to 95%
- › Improve cylinder peak pressure control and reduce backfire and maintenance expense
- › Reduce mechanical field failures
- › Fast, low-cost installation reduces downtime
- › Improve performance on start-up
- › Class 1, Divisions 1 and 2 environments
- › Cooper-Bessemer®, Clark, Worthington, Dresser and other engines
- › Superior Cooper design and service
- › Cooper reliability and electronic precision

LEGENDS DON'T STOP. WE MAKE SURE OF IT.™

CALL +1-844-RECIP-43 (INTERNATIONAL: +1-713-354-1299)
24/7 TECH SUPPORT: SUPPORT@COOPERSERVICES.COM
COOPERSERVICES.COM