

## ELECTRONIC PORT FUEL INJECTOR SYSTEM

Electronic fuel injection for four-cycle engines

The Electronic Port Fuel Injector System is a solenoid-operated fuel valve and electronic control system designed for large, four-cycle natural gas engines. This quick-response port fuel injector system is an innovative and cost-effective solution to extending the service life of reciprocating engines.

### Advanced fuel valve technology

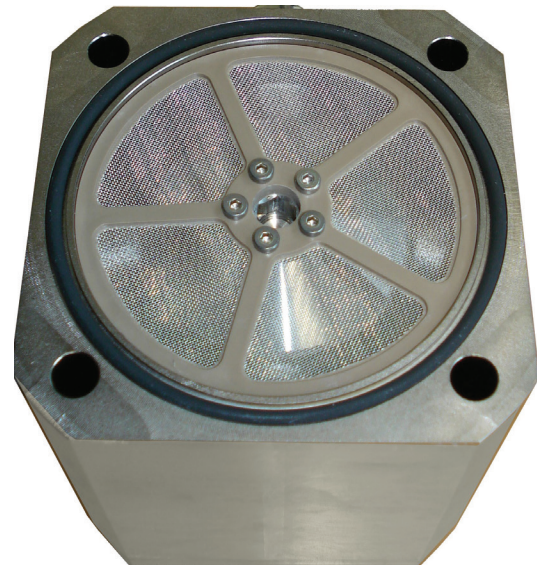
- › Solenoid-activated fuel admission
- › Applied as an in-manifold fuel injection system

### Advanced control technology

- › Precise control of engine fueling rate throughout start-up and load ranges
- › Replace governor and fuel control linkages
- › On-board systems diagnostics and serial data interface
- › Intuitive, user-friendly display
- › Expandable for peak pressure sensing and continuous power cylinder balancing

### Benefits

- › Save up to 9% on fuel
- › Reduce NOx by up to 95%
- › Improve in-cylinder mixing
- › Improve cylinder peak pressure control
- › Reduce backfire and maintenance expense
- › Reduce mechanical field failures
- › Fast, low-cost installation
- › Improve performance on start-up
- › Approved for Class 1, Divisions 2 environments
- › Superior Cooper design and service
- › Cooper reliability and electronic precision



**LEGENDS DON'T STOP. WE MAKE SURE OF IT.™**

CALL +1-844-RECIP-43 (INTERNATIONAL: +1-713-354-1299)  
24/7 TECH SUPPORT: SUPPORT@COOPERSERVICES.COM  
COOPERSERVICES.COM