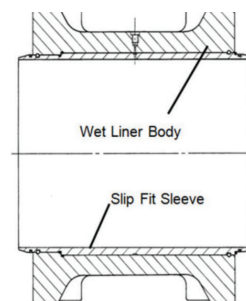
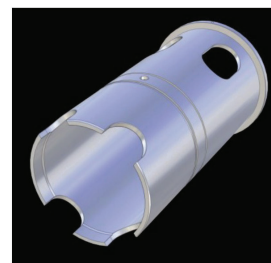


COMPRESSOR CYLINDER LINERS

ACI offers one of the most comprehensive cylinder liner designs, engineering, and manufacturing capabilities in the industry. Below are some of the standard styles available.

SPLIT-FIT LINERS

- › Installed in most O.E.M. cylinders:
 - Replaces cylinders with wet liners
 - Replaces interference fit liners
 - Installs in cylinder with no liners
 - Installs in existing wet liner bodies
- › Liners clamped in place using the front head bolt load:
 - Reduces maintenance time for installation/removal
 - Replaces easily for wear and/or performance reasons
- › Designed for application specifics:
 - Reline existing cylinders to meet changing conditions
- › Manufactured from high-quality centrifugally cast iron material:
 - Maintains a true and round cylinder bore
 - Maximizes cylinder liner durability
 - Maximizes component life (piston rings and rider bands)



WET TYPE LINERS

- › A liner style used in valve-in-head cylinders:
 - Designed as a duplicate replacement component to original O.E.M. design
 - Liner is part of the cylinder water jackets
 - Internal oil tubes required to distribute lube oil to clinder bore
- › Manufactured from high-quality cast iron material, usually with a sand casting:
 - Maintains a true and round cylinder bore
 - Maximizes cylinder liner durability
 - Maximizes component life (piston rings and rider bands)

DRY TYPE LINERS

- › A liner style used in valve-in-head cylinders, water or air cooled:
 - Designed as a duplicate replacement component to original O.E.M. design
 - Liner is separate of the cylinder water jackets
 - Lube oil is distributed to the bore through drilled feed holes
- › Manufactured from high-quality centrifugally cast iron material:
 - Maintains a true and round cylinder bore
 - Maximizes cylinder liner durability
 - Maximizes running life of piston rings and rider bands

LEGENDS DON'T STOP. WE MAKE SURE OF IT.™

CALL +1 855-2COOPER | +1 740-435-0240
24/7 TECH SUPPORT: SUPPORT@COOPERSERVICES.COM
COOPERSERVICES.COM

